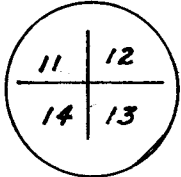


CERTIFIED LAND CORNER RECORDATION

T19N, R70W



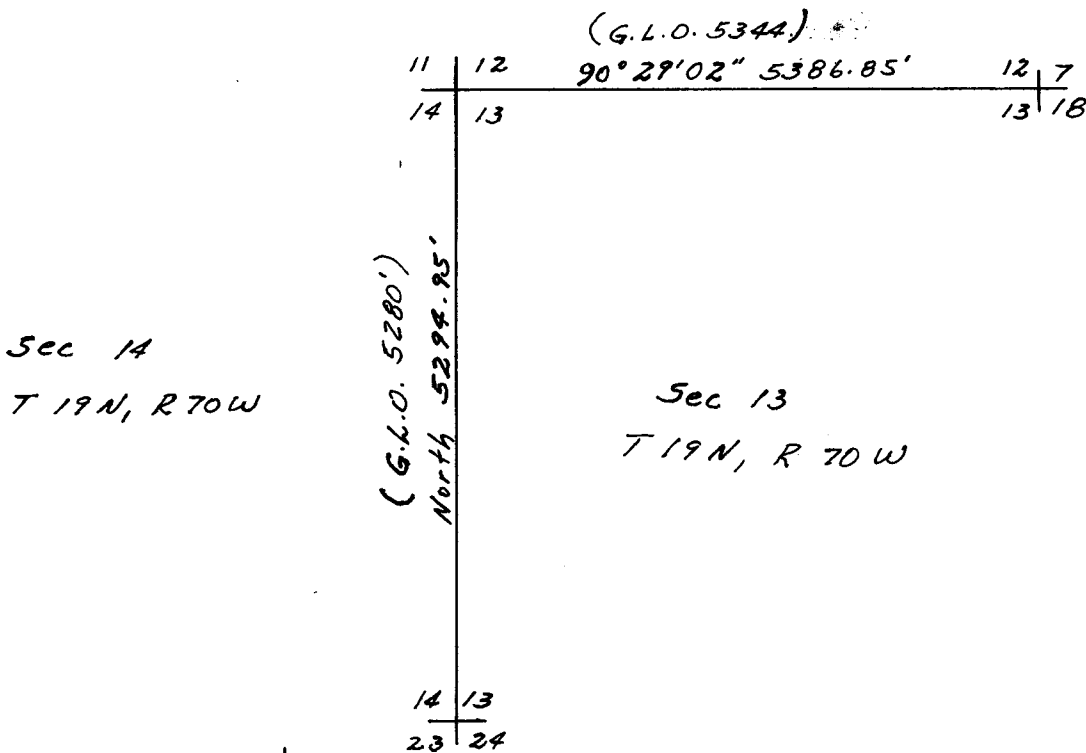
DESCRIPTION OF CORNER EVIDENCE FOUND, AND ORIGINAL RECORD (If known)

Found Grayish stone 8" x 8" standing 1' above ground with 1 mark in east face and 4 marks in south face. Original monument described as a sandstone 20" x 12" x 8" set 12" in ground and marked with 4 notches in south side and 1 notch in east side.

DESCRIPTION OF MONUMENT AND ACCESSORIES ESTABLISHED TO PERPETUATE THE ORIGINAL LOCATION OF THIS CORNER:

Set a 1 1/2" Iron pipe at south face as corner monument. Left stone in place as a reference marker.

SKETCH, WITH COURSE AND DISTANCE TO ADJACENT CORNER IF DETERMINED IN THIS SURVEY. (May Sketch or Paste Reproduction on Reverse Side.)



I, Edward C. Fry certify that I have carefully performed ~~or reviewed~~ the work done on the diagrammed corner as reported on this recordation form and approve the same.

Edward C. Fry P.E./L.S. 662
Signature of Surveyor Registration No.

STATE OF WYOMING,
Office of Clerk and Recorder,
County of _____

594249

This "corner record" was filed for record on the _____ day of OCT 2 1980, 19____, was noted on the cross-index plat and is assigned page No. _____, in book No. _____.

Janet C. Whitehead
County Official

Cross Index No.	T. _____	R. _____	Mer. _____
Photographed _____	T. <u>721</u>	R. <u>70</u>	Mer. _____
Indexed _____	T. _____	R. _____	Mer. _____
Posted _____	T. _____	R. _____	Mer. _____
Assessor _____	T. _____	R. _____	Mer. _____